

XCSTEM

SEVENTY
ZERO

NINETY
ZERO

hope



CAUTION: READ THIS BEFORE INSTALLING YOUR STEM!

Riding bicycles can be dangerous. These instructions should be read thoroughly before installation. Failure to follow these instructions before installing and using Hope Technology Components can result in severe injury or death.

BOX CONTENTS

- Stem
- 6 x Bolts

TOOLS REQUIRED

- 4mm Allen Key
- Torque Wrench

HOPE WARRANTY

All Hope Technology components are covered for two years from original date of purchase against manufacturer defects in material and workmanship. Proof of purchase is required. Product must be returned to the original retailer to process any warranty claim. This warranty does not cover any damage caused through mis-use or failing to comply by the recommendations given in this manual. This warranty does not affect your statutory rights.

PRODUCT SPECIFICATIONS

Depending on Stem model.

Handlebar clamp diameter: Ø31.8mm

Length: 70mm - 90mm

Rise: 0°

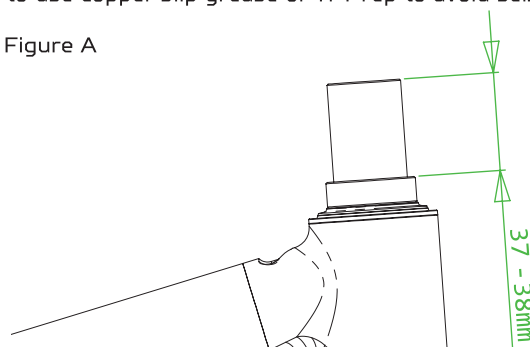
Fork steerer tube: Ø1 1/8" (Ø28.6mm) only

PRELIMINARY CHECKS

Ensure that the steerer tube is cut cleanly and level, free off any burrs (inside and outside). The stem should sit, once installed on the top of all headset parts and spacers, so that the steerer tube is approximately 2 to 3mm below the top of the stem. This is equivalent to 37-38mm of clear space on the steerer tube above all headset parts and spacer (see Figures A and B).

Ensure the steerer tube and handlebar clamp areas are both clean and dry (no grease!) It is also advisable to remove all bolts from the stem and apply a small amount of grease to the threads and under the bolt head. If you are fitting Ti bolts, it is preferable to use copper slip grease or Ti-Prep to avoid seizing.

Figure A



INSTALLATION

Making sure the stem etching is facing up, slide the stem onto the steerer tube and push down until it touches the spacers. If not already done, at this stage, it will be necessary to undo the steerer tube bolts to allow the stem to slide freely onto the tube.

Install the top cap and compression bolt of the head doctor (or other adjustment device) as per manufacturer's specifications (typically, preload the headset bearings until all play is removed but rotation is still smooth (see Figure B).

Re install the two greased steerer tube clamp bolts and slightly tighten them. When you are happy with the stem orientation (making sure the stem is in line with the front wheel!), tighten alternatively the steerer tube clamp bolts to **5 N.m**

NOTE: To help align the stem, the bars could be put in place and slightly tightened at this stage.

Install the handlebars and position the clamp. Install first the two top clamp bolts (previously greased) and slightly tighten them. When you are satisfied with the handlebars position, tighten the two top clamp bolts to **5 N.m**.

Alternate between the two bolts when tightening until torque setting is achieved. There should be an assembly gap at the bottom of the plate. Install the two bottom clamp bolts and tighten them alternatively to **5 N.m** (see Figure D).

Figure B

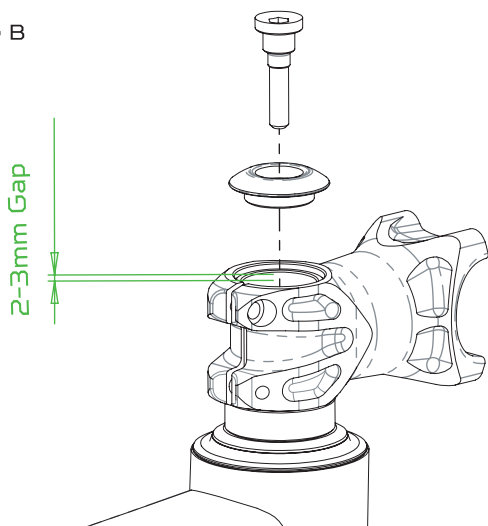
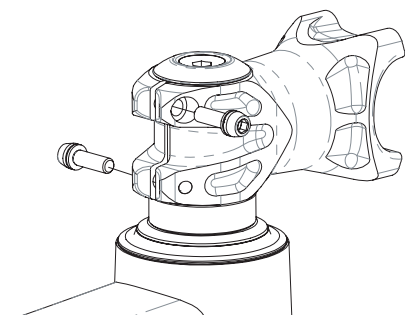


Figure C



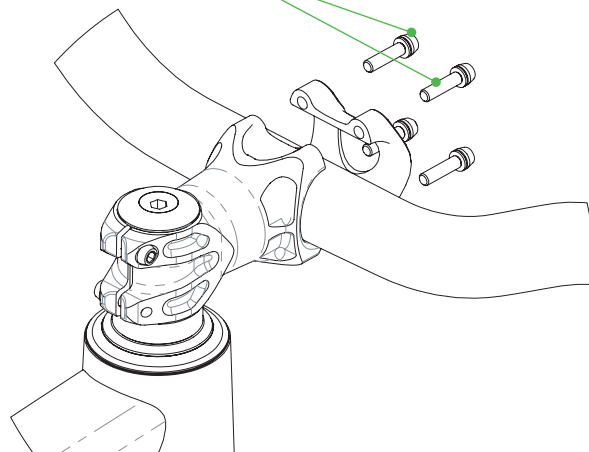
M5x16mm (2x): 5N.m



hope | HCSTEM

Figure D

Install and tighten the two top bolts first



M5x20mm (4x): 5N.m

NOTE

Hope stems are using custom stainless steel bolts. Do not substitute them for lower strength bolts.

You can use Hope's Ti bolt upgrade. Ti bolts are Ti 6Al-4V grade, again do not use any lower grade bolts.

Do not use shorter bolt length than the one specified here. Full thread engagement is required.

MAINTENANCE

Periodically check the hardware for tightness. Be careful not to over tight the bolts!

Periodically regrease hardware using appropriate grease. Regularly inspect all parts of the stem for any sign of damage, especially after any big crash!

HOPE TECHNOLOGY
(IPCO) Limited

Hope Mill, Calf Hall Road
Barnoldswick, Lancashire
BB18 5PX, United Kingdom

T: 01282 851400 E: info@hopetech.com W: hopetech.com